



Connects²
...connecting to the aftermarket

Connects2Vision

User Manual
CAM-VL1-AD

Camera Add-On Interface
Volvo S60, XC60, V40 2015-UP
For vehicles with OEM Sensus systems



PRODUCT FEATURES

- Front and rear camera inputs (with auto switching)
- LVDS output support: 800 x 400 / 400 x 240 / 1024 x 480 screens
- Dynamic parking guidelines with original radar-detection image
- Plug & play harness
- Compatible with NTSC cameras
- Updatable firmware via Micro SD

Disclaimer

Read the manual prior to installation. Technical knowledge is necessary for installation. Please ensure you use the correct tools to avoid damage to the vehicle or product.

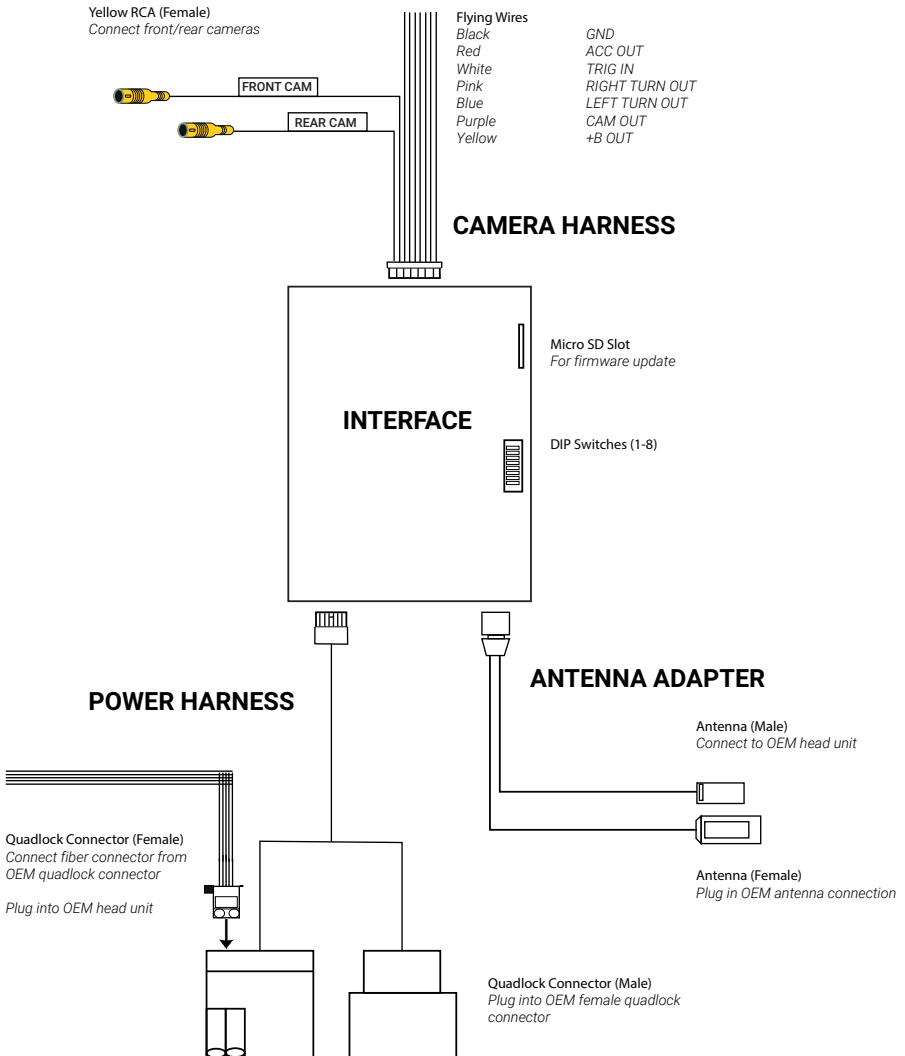
Connects2 can not be held responsible for the installation of this product.

Technical Support

Connects2 want to provide a fast and suitable resolution should you encounter any technical issues. With this in mind, when contacting Connects2, try to provide as much Information as possible. This will speed up the process and help us to help you.

Please use our dedicated online technical support centre: support.connects2.com

INTERFACE CONNECTIONS



PRIOR TO INSTALLATION

Setting the DIP Switches

Before installing the interface into the vehicle, set the 8 DIP switches on the side of the interface as follows:

DIP 1

'OFF' if installing the product into an S60 model or XC60 model vehicle.

'ON' if installing the product into a V40 model vehicle

DIP 2

'OFF' if connected to a forward-facing camera

'ON' if connected to a DVR (note: press and hold 'MY CAR' button to access the image)

DIP 3

'OFF' if connected to a reversing camera

'ON' if connected to a 360 degree camera

DIP 4

'OFF' to enable guidelines

'ON' to disable guidelines

DIP 5 - 8

Not Used

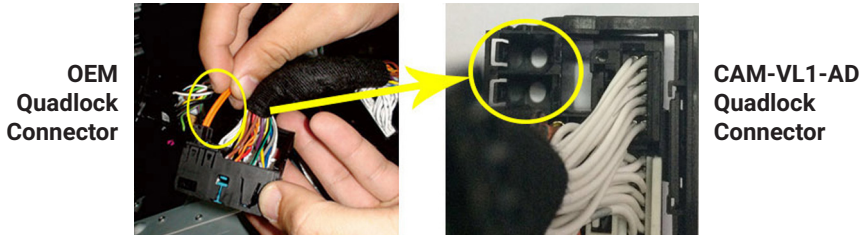
INSTALLATION

Dash Disassembly

1. Use a panel removal tool to remove the climate control panel from the vehicle and unplug the green connector
2. Remove the 6 screws located behind the climate control panel and the 2 screws at the rear of the centre console
3. Remove the main fascia panel and centre console and unplug the green connector
4. Remove the two screws behind the centre console and then pull out the OEM head unit
5. Unplug the 40 way quadlock connector from the back of the OEM head unit and remove the orange fiber cable from the quadlock connector

Connecting the Interface

6. Plug the fiber cable into one of the two ports at the back of the CAM-VL1-AD 40 way quadlock connector on the CAM-VL1-AD power harness as shown below



7. Connect the OEM quadlock connector to the corresponding quadlock connector on the CAM-VL1-AD power harness

8. Connect the CAM-VL1-AD quadlock connector to the back of the OEM head unit in place of the original

9. Connect the CAM-VL1-AD power harness to the CAM-VL1-AD interface box

10. Unplug the blue antenna connector from the OEM head unit and connect it to the corresponding plug on the CAM-VL1-AD antenna adapter. Then connect the antenna adapter to the OEM head unit.

11. Connect the CAM-VL1-AD antenna adapter to the CAM-VL1-AD interface box

12. Connect the CAM-VL1-AD camera harness to the CAM-VL1-AD interface box

13. Fit the camera/s (sold separately) and route the wiring from the front/back of the vehicle to the interface as desired

13. Connect the required camera connections to the CAM-VL1-AD camera harness. The interface supports front and rear cameras which can be connected to the dedicated yellow RCA connections on the CAM-VL1-AD camera harness.

Connect the required flying wires to the vehicle:

Black	GND
Red	ACC OUT
White	TRIG IN
Pink	RIGHT TURN OUT
Blue	LEFT TURN OUT
Purple	CAM OUT
Yellow	+B OUT